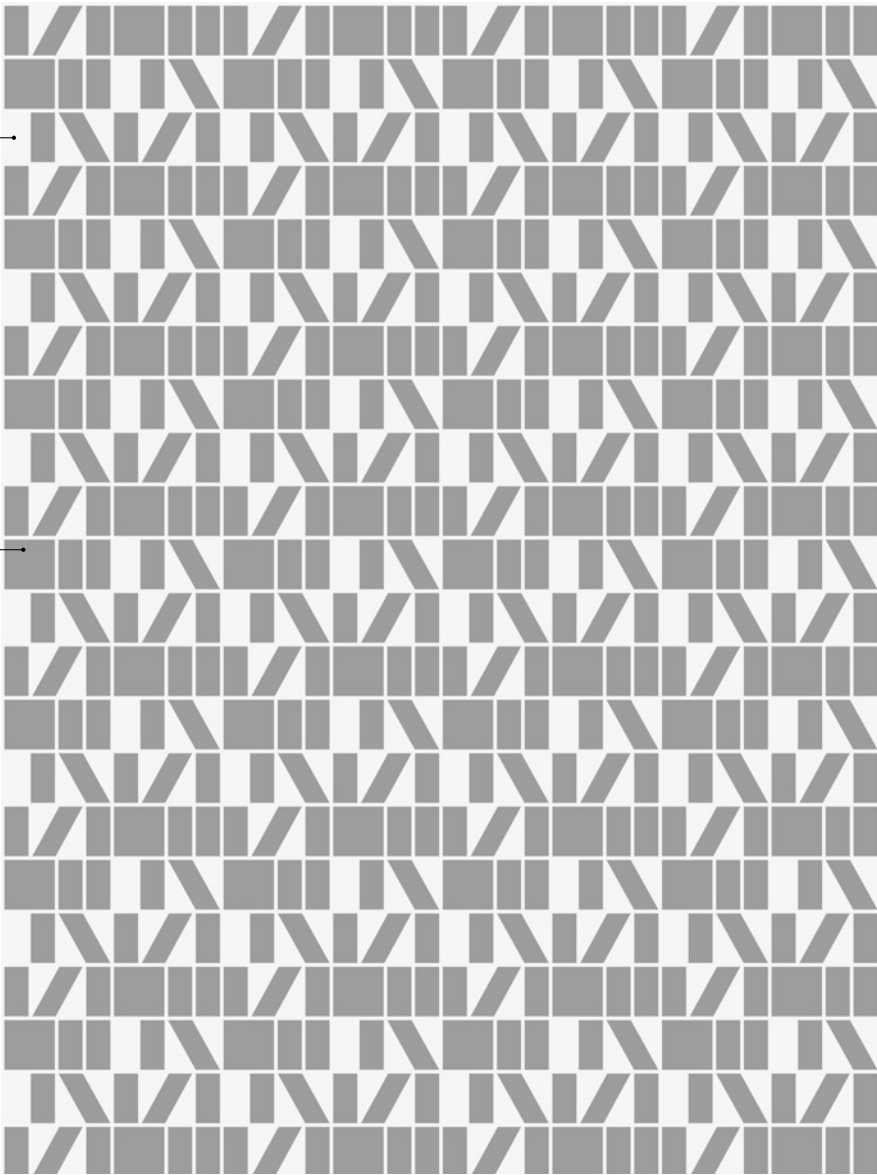


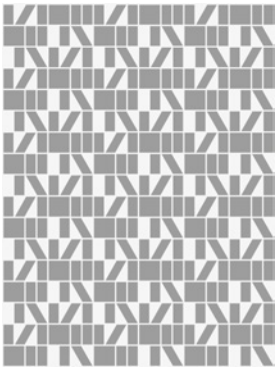
Kelim Untitled_AB15 0023 Shadow
Kelim Untitled_AB15 0004 Sand

0033
0001

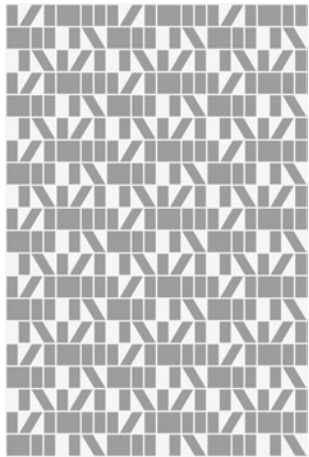
0023
0004



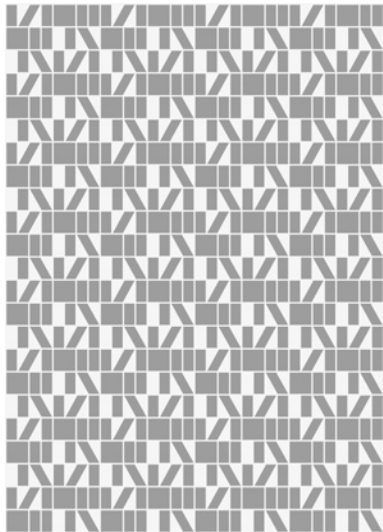
180 x 240cm



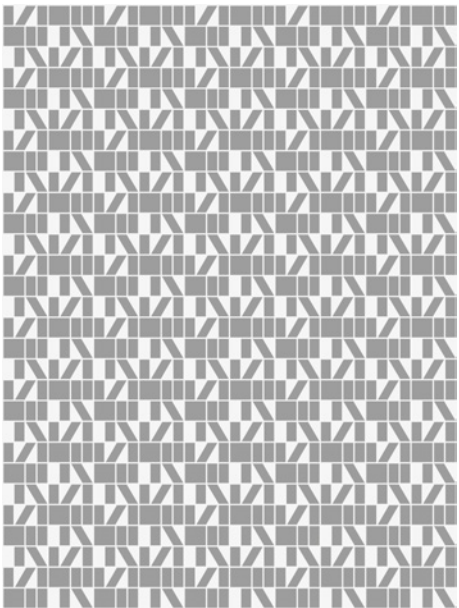
200 x 300cm



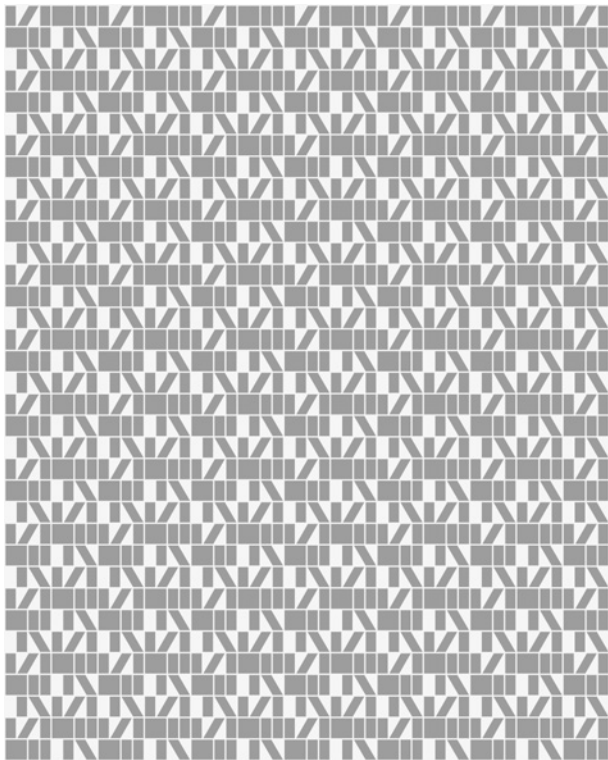
250 x 350cm



300 x 400cm



400 x 500cm



2025-201410005

Kelim Untitled_AB15



kvadrat

Kelim Untitled_AB15

Design Alain Biltereyst

Production method Hand woven kelim

Material 100 % pure New Zealand wool

Height 5 mm (¼")

Weight 2000 g/m² (6.5 oz/sq ft)

Standard size 180 cm × 240 cm (70 ¾" × 94 ½")

200 cm × 300 cm (78 ¾" × 118"), 250 cm × 350 cm (98 ½" × 137 ¾")

300 cm × 400 cm (118" × 157 ½")

Size variation +/- 3%

Traffic Suitable for heavy residential and commercial use and the use of castors with exceptions of stairways and corridors

Flammability EN 13501-1 Bfl-s1, ASTM D 2859/CPSC FF 1-70/FF 2-70, 16 CFR 1630, ASTM E 648 Class I, ASTM E 662

Care Professional cleaning

Country of origin India

Notes

Slight colour differences may occur

Irregularities or waviness may occur as a result of the hand woven process

Abrash character may occur, created by special spinning and dyeing process of the yarn

Rug underlay recommended

Larger sizes possible on request

Round or odd shape not possible

Available in customized colours, choose from 40 Kelim colours

Pattern is scaled up for each standard size, visualisation available

For more information, please visit: kvadrat.dk



Kelim Untitled_AB15 0023



Kelim Untitled_AB15 0004